



# PARIS

**FAST-TRACK CITIES 2024**

13-15 October 2024 | Maison de la Mutualité, Paris

## **Promising Preliminary Data for *PrEP Well*: A Multi-Component, Community-Led PrEP Implementation Strategy with Structural Supports for Transgender and Nonbinary Persons in Los Angeles**

**Erik Storholm, Ph.D. Associate Professor  
San Diego State University,  
RAND and UCLA CHIPTS**



## Background

- Trans and nonbinary (TGNB) communities in the U.S. have consistently demonstrated strength and resilience despite facing disproportionately high HIV prevalence rates.
- Racial and ethnic minority and socioeconomically disadvantaged TGNB persons encounter notably higher rates, with prevalence ranging from 24% to 52% in Los Angeles.
- Trans-led **Trans Wellness Center** in Los Angeles provides resources and services (housing, employment, clothing, legal, mental health, benefits enrollment) to approximately 1,300 TGNB clients each year.



## Preliminary Work

- Community-academic partnership was formed in 2018.
- Identified PrEP as evidenced-based innovation to be implemented at the Trans Wellness Center.
- Identified barriers to engaging with local HIV prevention efforts (e.g., stigma, violence, lack of transportation, unstable housing, unmet mental health needs)
- Goal of creating a comprehensive one-stop shop model of Trans-Led PrEP care (outreach, education, HIV testing, PrEP navigation, benefits enrollment, prescriptions, pharmacy fill).

AIDS and Behavior (2021) 25:2301–2315  
<https://doi.org/10.1007/s10461-021-03159-2>

ORIGINAL PAPER



### Multilevel Barriers to HIV PrEP Uptake and Adherence Among Black and Hispanic/Latinx Transgender Women in Southern California

Adedotun Ogunbajo<sup>1</sup> · Erik D. Storholm<sup>2,3,4</sup> · Allison J. Ober<sup>3,4</sup> · Laura M. Bogart<sup>3,4</sup> · Cathy J. Reback<sup>4,5</sup> · Risa Flynn<sup>6</sup> · Phoebe Lyman<sup>6</sup> · Sheldon Morris<sup>7</sup>

Accepted: 8 January 2021 / Published online: 29 January 2021  
© The Author(s), under exclusive licence to Springer Science+Business Media, LLC part of Springer Nature 2021



Behavioral Medicine



ISSN: (Print) (Online) Journal homepage: <https://www.tandfonline.com/loi/vbmd20>

### Facilitators of PrEP Persistence among Black and Latinx Transgender Women in a PrEP Demonstration Project in Southern California

Erik D. Storholm, Adedotun Ogunbajo, Carrie L. Nacht, Chloe Opalo, Keith J. Horvath, Phoebe Lyman, Risa Flynn, Cathy J. Reback, Jill Blumenthal, David J. Moore, Robert Bolan & Sheldon Morris

AIDS and Behavior (2023) 27:745–759  
<https://doi.org/10.1007/s10461-022-03807-1>

ORIGINAL PAPER



### Gender-Based Violence and Post-traumatic Stress Disorder Symptoms Predict HIV PrEP Uptake and Persistence Failure Among Transgender and Non-binary Persons Participating in a PrEP Demonstration Project in Southern California

Erik D. Storholm<sup>1,2,3</sup> · Wenjing Huang<sup>2</sup> · Adedotun Ogunbajo<sup>2,4</sup> · Keith J. Horvath<sup>5</sup> · Cathy J. Reback<sup>3,6</sup> · Jill Blumenthal<sup>7</sup> · David J. Moore<sup>7</sup> · Risa P. Flynn<sup>8</sup> · Robert K. Bolan<sup>8</sup> · Katya C. Corado<sup>9</sup> · Sheldon R. Morris<sup>7</sup>

Accepted: 27 July 2022 / Published online: 2 September 2022  
© The Author(s), under exclusive licence to Springer Science+Business Media, LLC, part of Springer Nature 2022

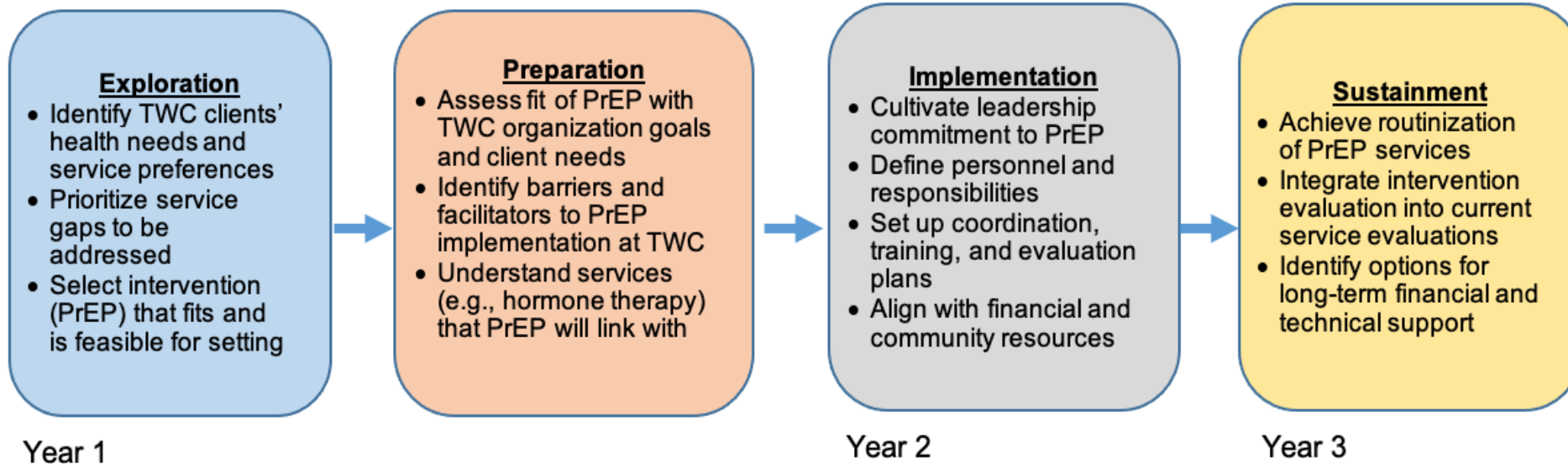


# PrEP Well Implementation Project



LOS ANGELES  
LGBT  
CENTER

- Identified implementing partner
- Obtained 3-year implementation science grant



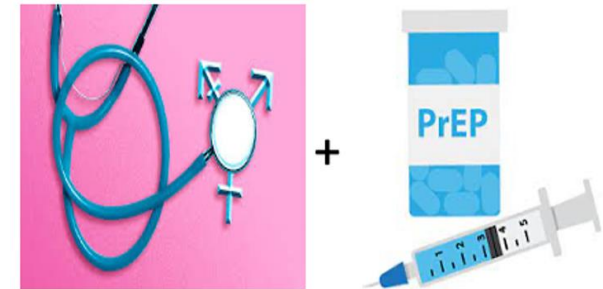
## Exploration and Planning Phases (needs/strategies)

- **Funding:** Need to be able to bill for services, brought TWC in scope under LGBT Center FQHC to reimburse for services (2021).
- **Physical space:** Need lab space, office space for PrEP navigator, pharmacy or dispensary.
- **Data capacity needs:** Need centralized client tracking system, automatized PrEP reminders, leveraged LGBT Centers existing client tracking systems.
- **Staffing needs:** Need TGNB PrEP navigator, conduct HIV test and assist with PrEP Benefits enrollment. Need clinical provider to provide PrEP at TWC. Need PrEP champion.
- **Staff training:** Need ongoing PrEP training with all TWC staff, regardless of role/connected with training from LA LGBT Center navigator.
- **Outreach and education to community:** Need TGNB-specific PrEP educational materials, need to conduct education/outreach.

Research Article

### “By Us, for Us”: Qualitative Insights to Inform Implementation of Comprehensive Pre-Exposure Prophylaxis Services in a Trans Community Center

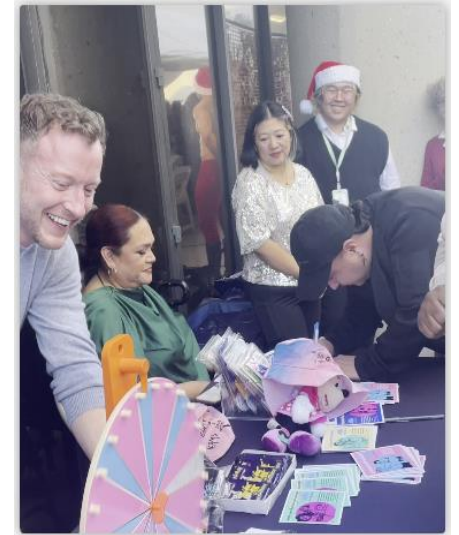
Reynolds, Hannah E. | Nacht, Carrie L. | Opalo, Chloe | Marroquin, Mariana | Dopp, Alex R. | Ling Murtaugh, Kimberly | Flynn, Risa | Baumgardner, Mika | Storholm, Erik D.  
Annals of LGBTQ Public and Population Health, May 2024, DOI: 10.1891/LGBTQ-2023-0038



## PrEP Well Implementation

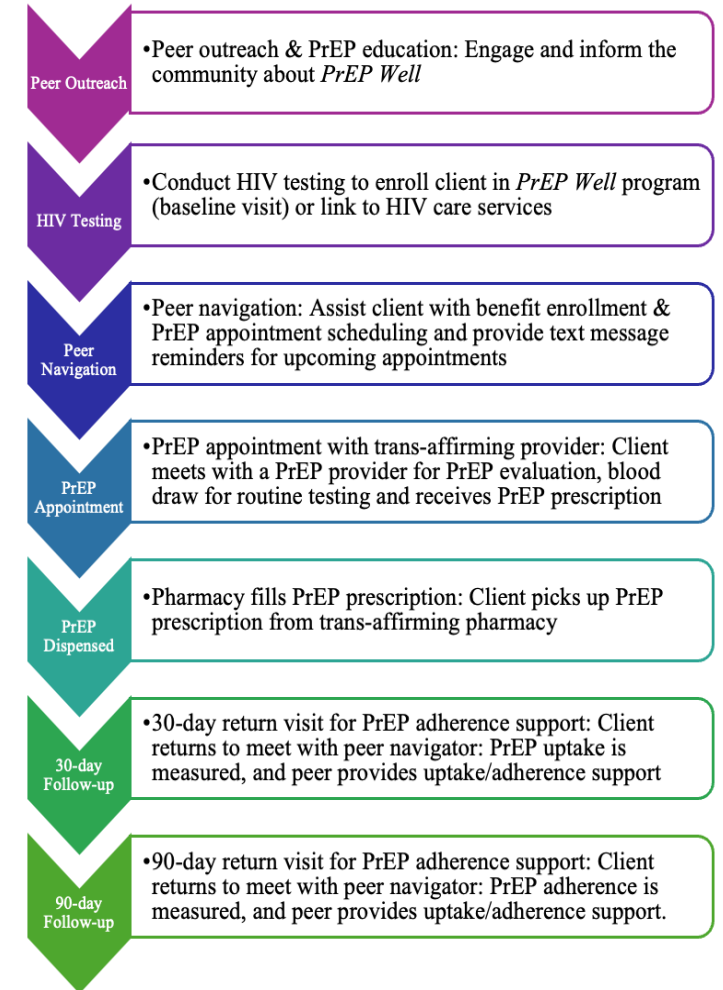
Selected and prioritized strategies for implementation:

- Identified navigator from community who has been trained to do HIV testing, navigate PrEP benefits enrollment, appointment scheduling and reminders.
- Provided PrEP training for all TWC staff.
- Developed PrEP Well materials in Spanish and English
- Conducted outreach at several TGNB focused events/spaces (including online).
- PrEP offered through multiple (evolving) options at TWC:
  - At first same day via uber voucher to LGBT Center for PrEP appointment.
  - Via telehealth with Rx sent to nearby pharmacy. Testing fulfilled at nearby lab.
  - 1 day (2020), 2 days (2023), and now 5 days (2024) per week onsite clinical provider for PrEP.
  - New lab space at TWC started 2022.
  - Plans for new pharmacy/dispensary for now sending to Target or Walgreens across street.



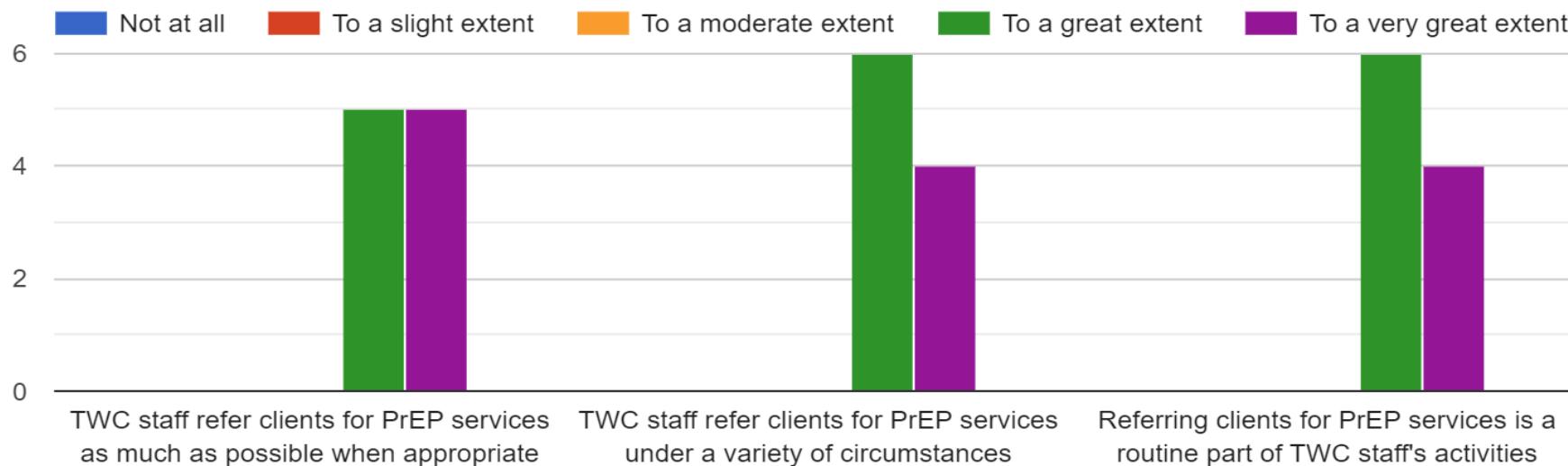
# PrEP Well preliminary effects

Participant-level Efficacy Outcomes	All Phases 8/1/22-1/31/24 n (%)	Implementation Phase I 8/1/22-1/31/23 n (%)	Implementation Phase II 2/1/23-7/31/23 n (%)	Sustainment Phase III 8/1/23-1/31/24 n (%)	X <sup>2</sup> statistic, p-value
Received peer outreach, HIV testing, and peer navigation (baseline enrollment visit).	N=113	n=27	n=36	n=50	
Attended PrEP visit with provider, labs provided, and PrEP prescription written	60 (53.1)	13 (48.2)	18 (50.0)	29 (58.0)	X <sup>2</sup> (2)=0.88 p=.64
Returned for 30-day visit and urinalysis showed PrEP uptake	50 (83.3)	10 (76.9)	15 (83.3)	25 (86.2)	X <sup>2</sup> (2)=0.55 p=.76
Returned for 90-day visit and urinalysis showed sustained PrEP use	44 (73.3)	6 (46.2)	18 (100.0)+	20 (70.0)	X <sup>2</sup> (2)=11.73 p<.01
Returned for 90-day visit and dried blood spots showed PrEP adherence	40 (66.7)	6 (46.2)	15 (83.3)	19 (65.5)	X <sup>2</sup> (2)=4.74 p<.05



# PrEP Well adoption among providers

The following questions ask about PrEP Well at TWC. Please indicate the extent to which you agree with the following items:





## *PrEP Well* acceptability and feasibility among staff and providers

100%

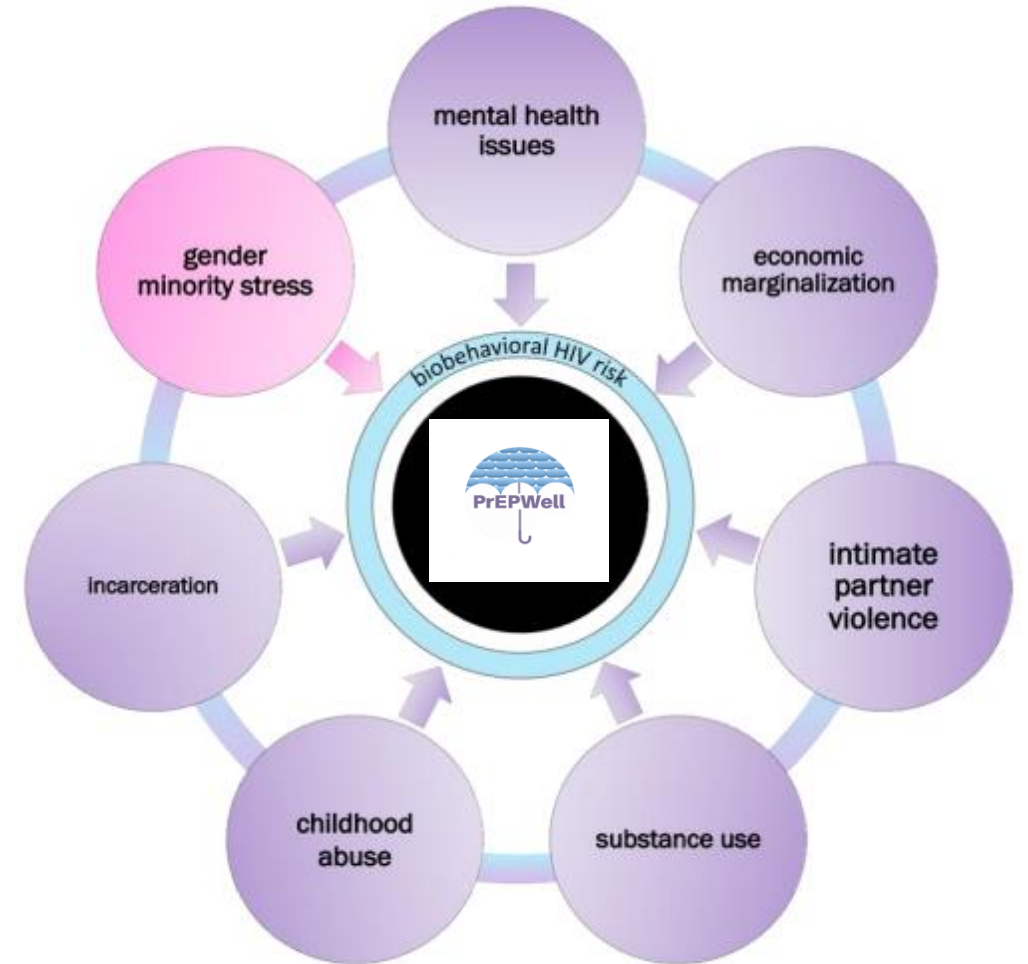
- 10/10 providers/staff agreed or completely agreed that *PrEP Well* met their approval
- 10/10 providers/staff agreed or completely agreed that *PrEP Well* was appealing
- 10/10 providers/staff agreed or completely agreed that they liked and welcomed *PrEP Well*
- 10/10 providers/staff agreed or completely agreed that *PrEP Well* was fitting, suitable, appropriate, and a good match for TWC.
- 10/10 providers/staff agreed or completely agreed that *PrEP Well* was doable, possible, and implementable for TWC.

## *PrEP Well* acceptability among clients

- *“I think it is a good program, it’s actually very helpful and informative; and basically it’s it helped me and I also had fun doing it.” (26 y.o. Black trans woman)*
- *“I think just knowing that someone cares to find [PrEP for me] made a big difference. It’s what drew me to the program to begin with. And then, I also think just the environment here... the environment is really... comforting. It’s welcoming. So that’s a big part of it... just knowing where you’re going to be safe while your waiting for your appointment that matters a lot, especially since it’s something we need to think about on a daily basis.” (21 y.o. Latinx trans women)*
- *“[PrEP Well] is also good because when you are here you get help with food, clothes, or help to pay for something... the telephone. The [PrEP navigator] speaks Spanish too and I speak only Spanish, you break down the information that I want to hear.” (33 y.o. Latinx trans women)*

## PrEP Well next steps

- *Role of behavioral economic incentives from local trans-owned businesses*
- *Integration of PrEP Well with other TWC programs and services*
- *Sustainment planning (institutionalization)*
- *Mental health component for TGNB clients who experienced violence*
- *Economic justice interventions*



## PrEP Well acknowledgements

### PrEP Well Team

- Chloe Opalo
- Mariana Marroquin
- Jeffrey Rodriguez
- Carrie Nacht
- Kimberly Ling Murtaugh
- Risa Flynn
- Mika Baumgardner
- Alex Dopp
- Erik Storholm



### Grant Funding

- H21IS3484 California HIV/AIDS Research Program
- P30MH058107-26 & 27 US National Institutes of Health
- R34MH138228 US National Institutes of Health



# FAST-TRACK CITIES 2024

