

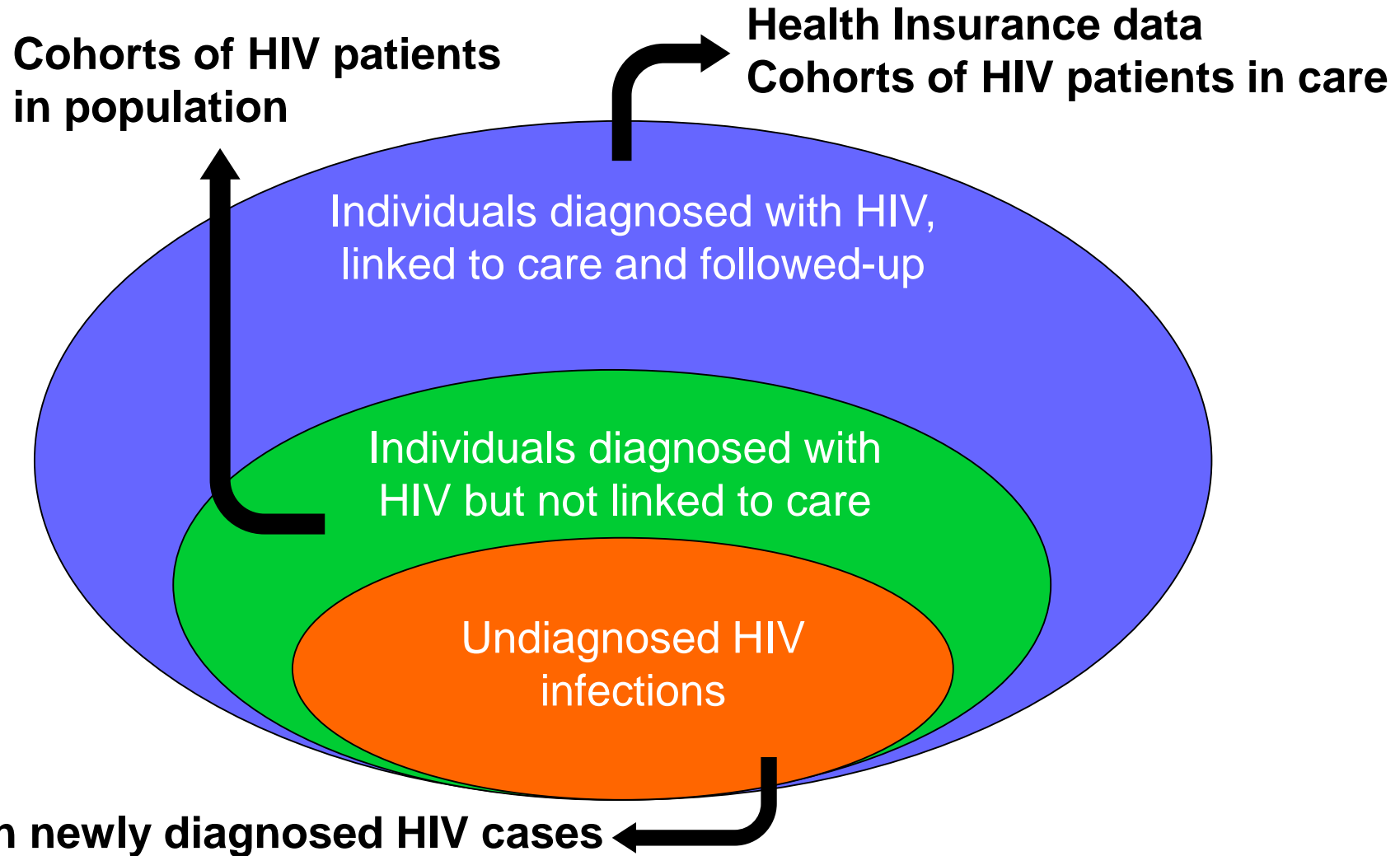


2019 90-90-90 Targets

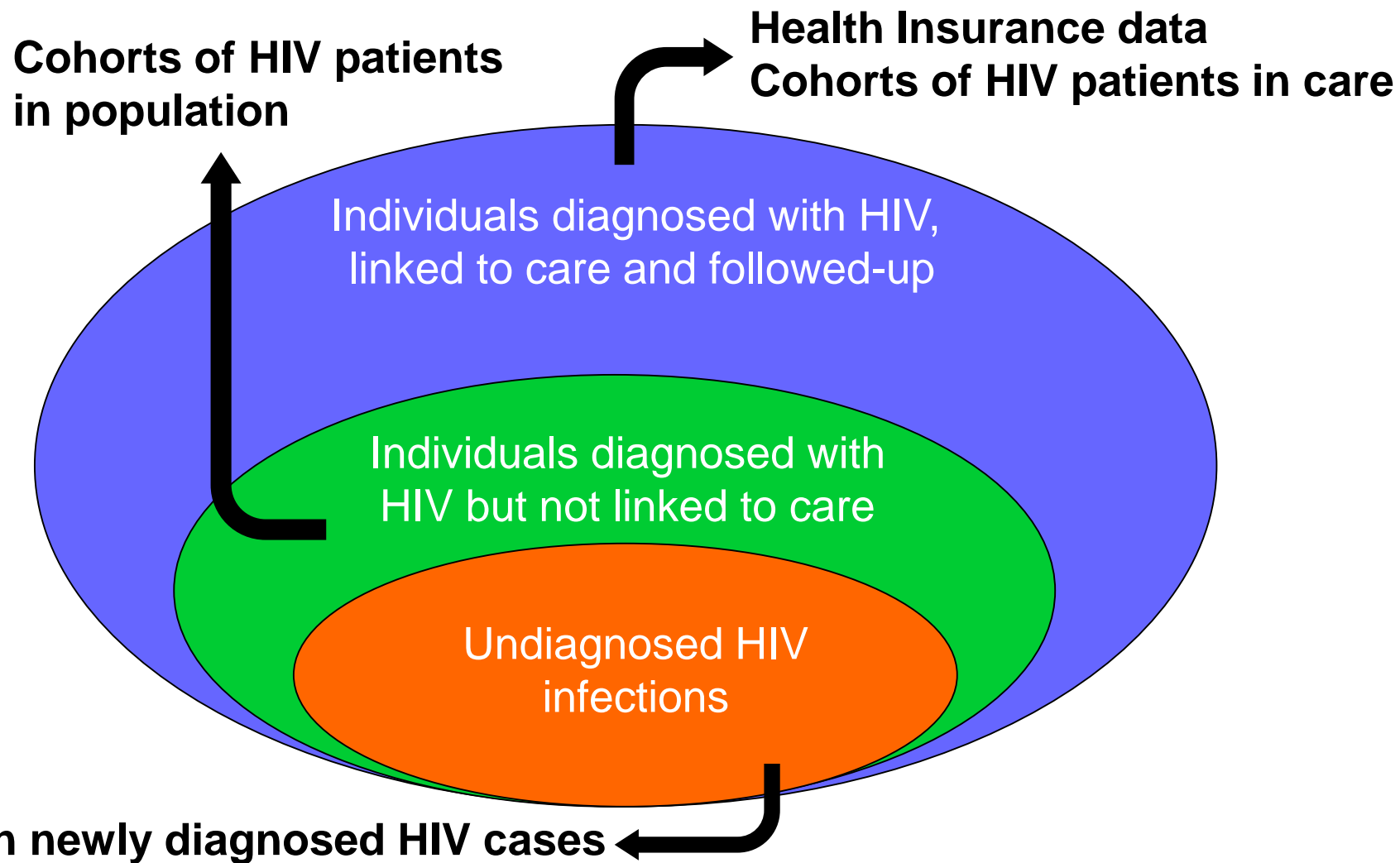
France progress and experience

François Dabis, MD, PhD

Data sources to estimate the cascade



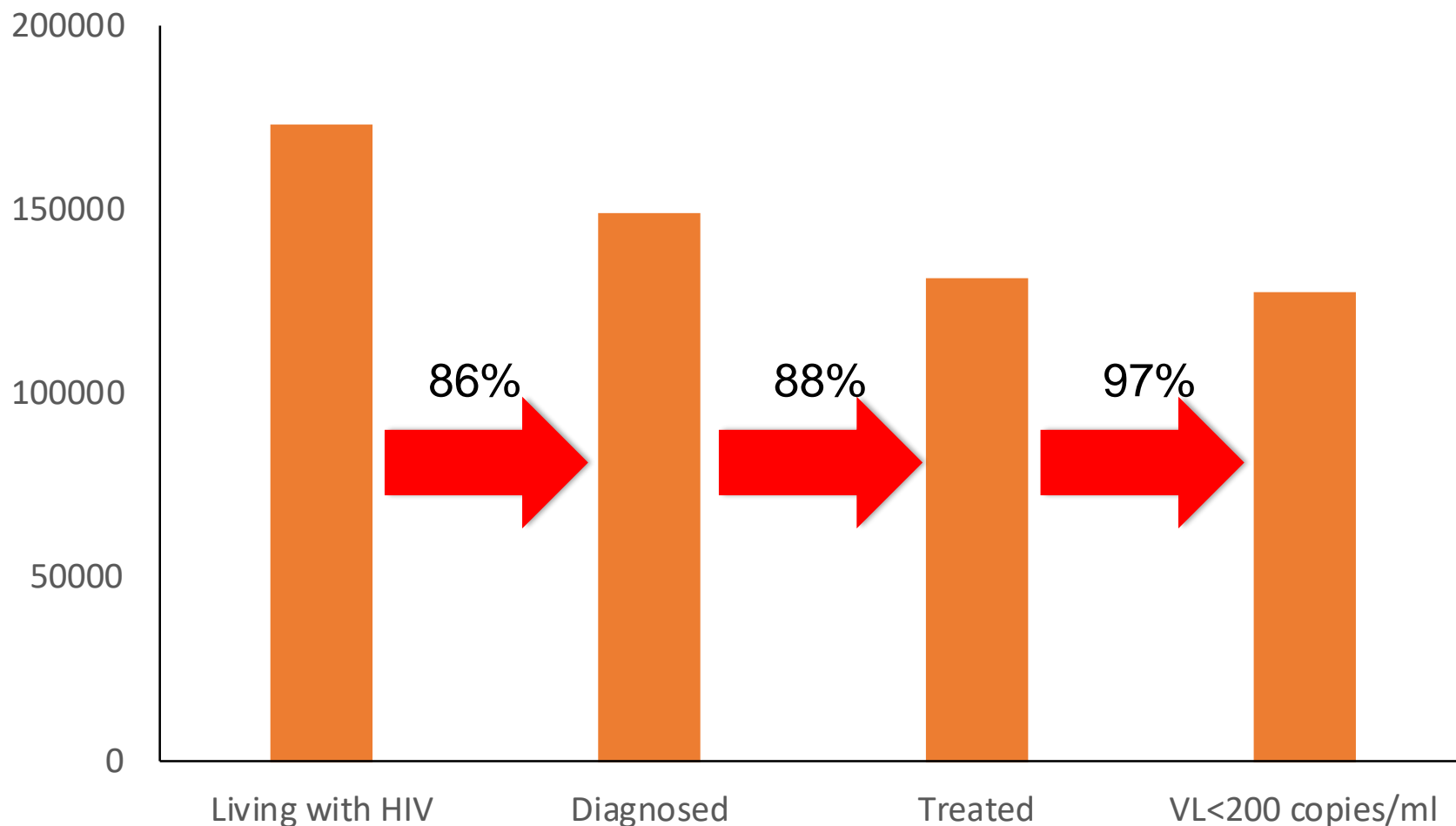
Data sources to estimate the cascade + modeling to provide estimates



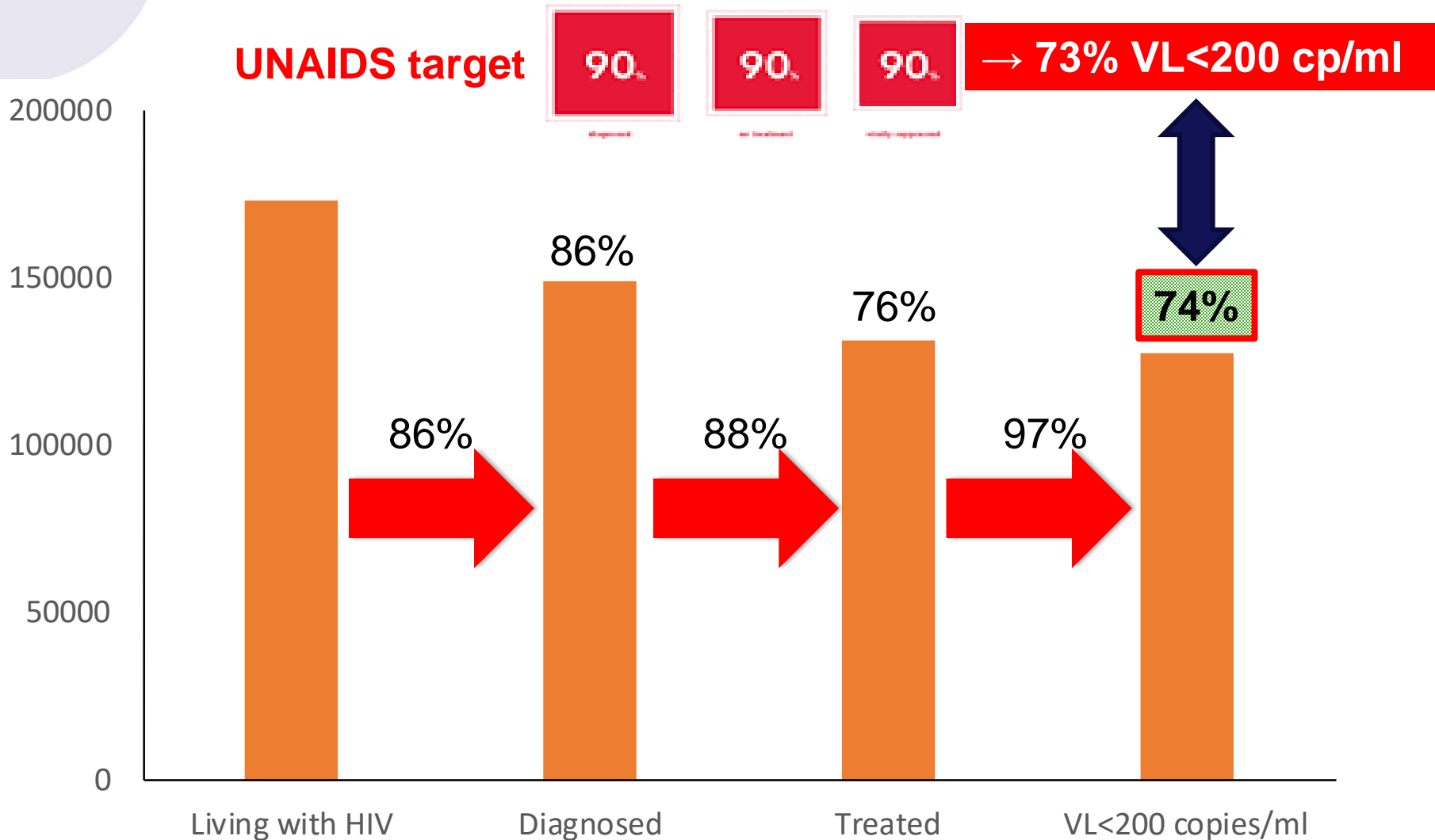
Cascade of care in France in 2016

~ 173 000 individuals living with HIV

Source: ANRS & Santé Publique France



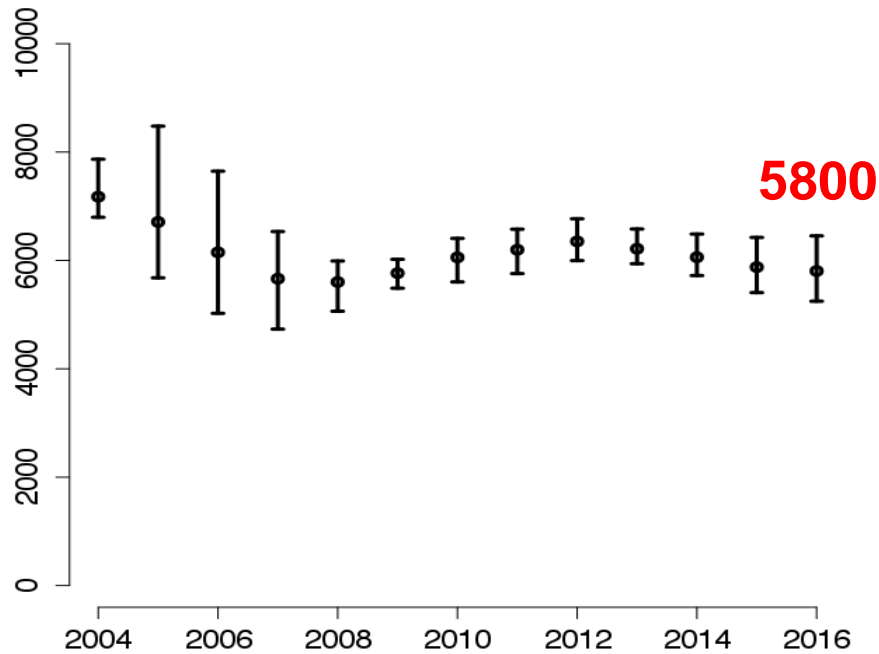
« Good » cascade of care in France in 2016



Good cascade... ... but stable incidence,

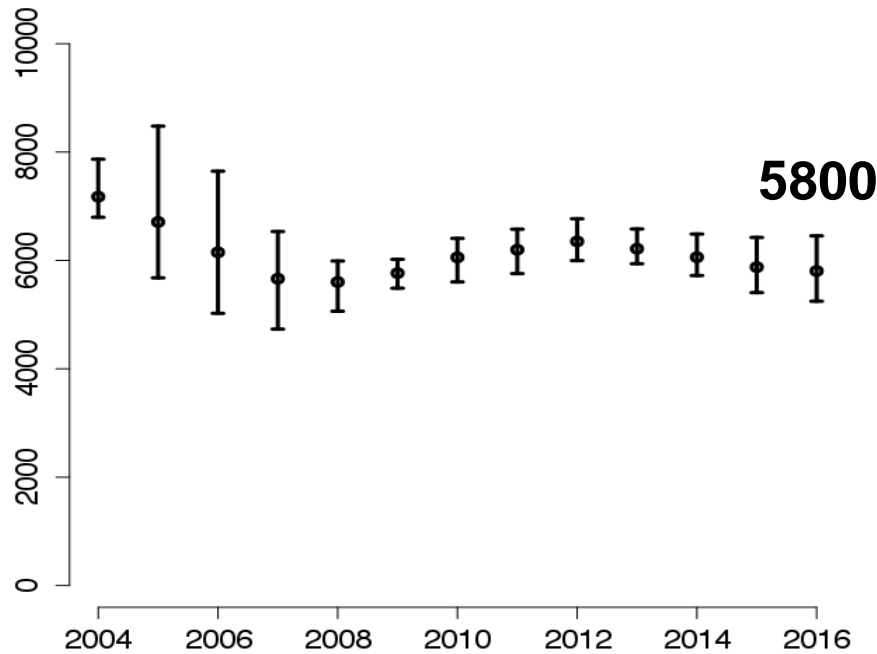
Estimated number of new HIV infections 2004-2016

Source: ANRS & Santé Publique France

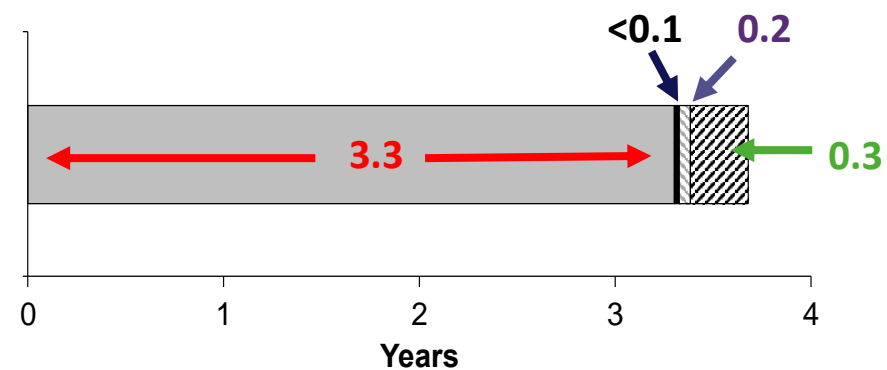


Good cascade... ... but stable incidence, & long time interval infection - diagnosis

Estimated number of new HIV infections
2004-2016



Median times in years
between infection and diagnosis
(2014-2016)



■ Infection --> Diagnosis
■ Diagnosis --> Care entry
▨ Care entry --> ART initiation
▨ ART initiation --> Suppressed VL

Long time interval between infection and diagnosis in France in 2014-2016

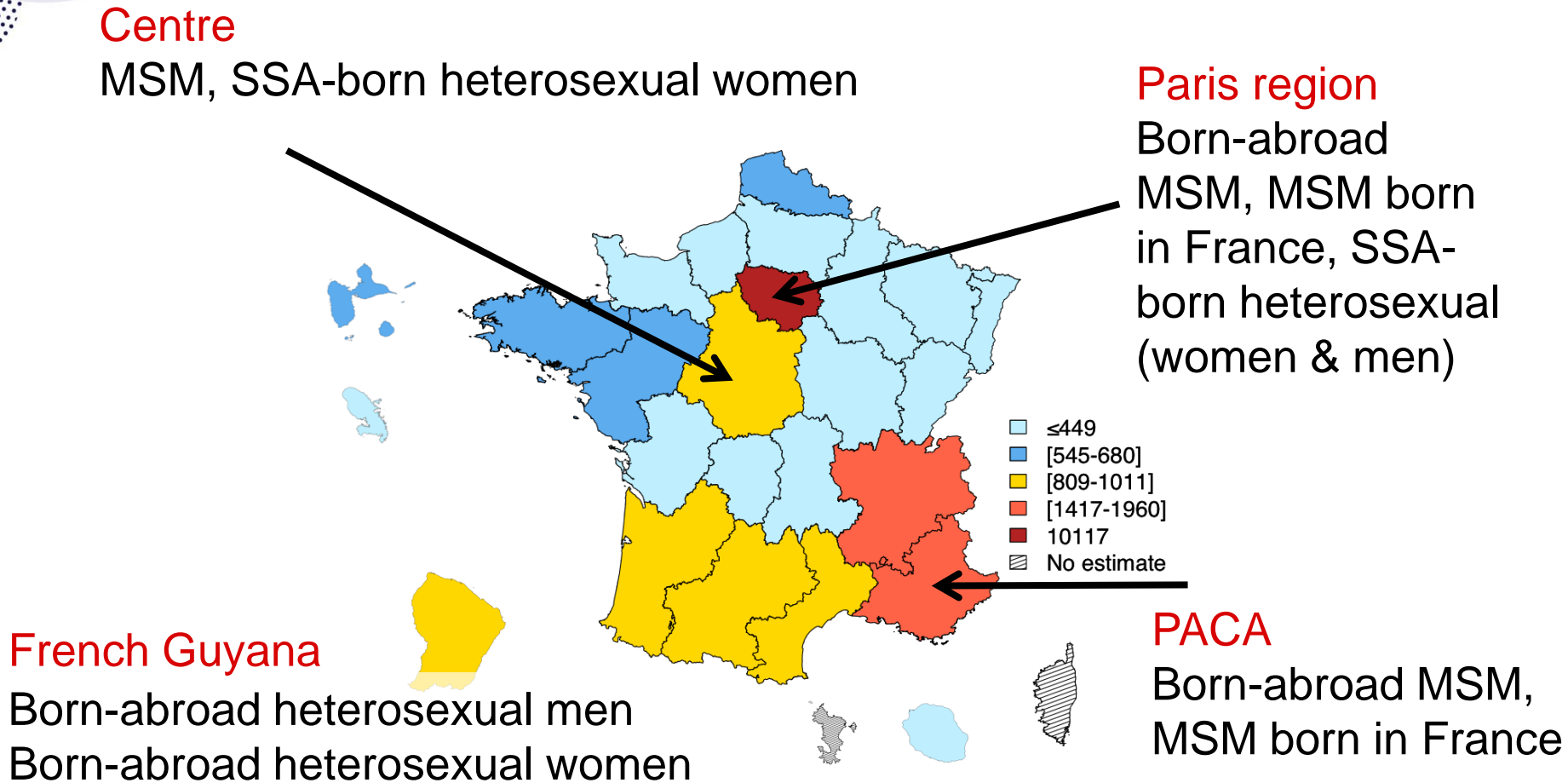
Source: ANRS & Santé Publique France

Median time between infection and diagnosis: 3.3 years

>4 years for heterosexual men (whether born in France or abroad)

<3 years for MSM and heterosexual women (whether born in France or abroad)

Geographic heterogeneity: Estimated number of undiagnosed HIV infections by administrative region



Long time interval between infection and diagnosis in France in 2014-2016

Our challenge :

- **Reduce entry into the cascade**
- **Improve the 1st 90 overall**
- **Fix disparities between vulnerable populations and between regions**

The 4th 90 : good quality of life

THE TREATMENT TARGET



diagnosed



on treatment



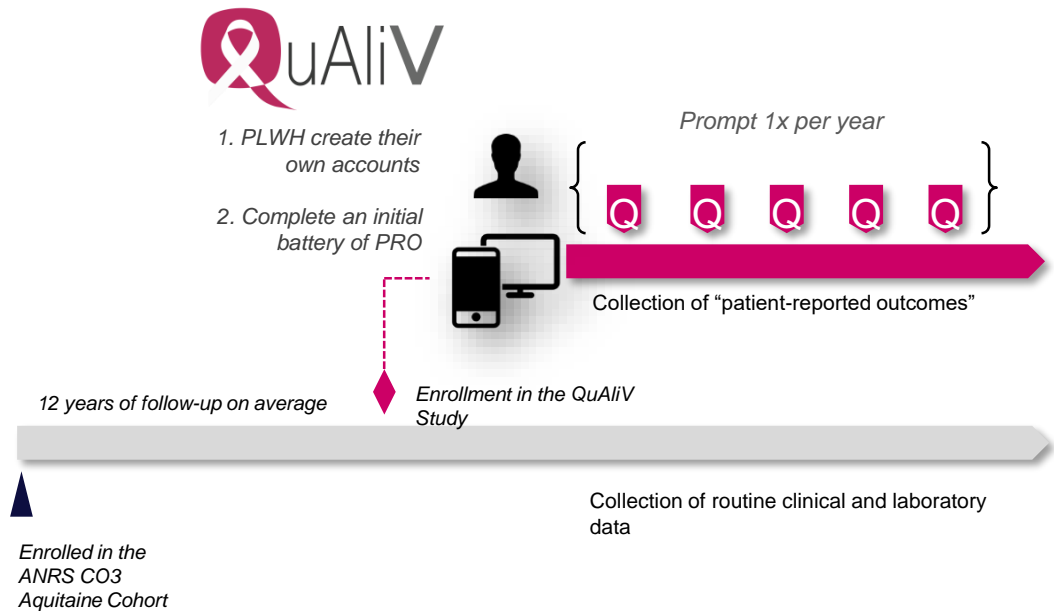
virally suppressed



good quality of life

Lazarus et al., BMC Med, 2016

The ANRS CO3 Aquitaine Cohort's « Bring your own device » solution



Barger et al., JMIR Research Protocol, 2018

Acknowledgements

Dominique Costagliola, Virginie Supervie

Diana Barger, Fabrice Bonnet, ANRS CO3 cohort



francois.dabis@anrs.fr



@DabisFrancois