



“Success Stories from the US South”

The Evolving Case of South Carolina:

Leveraging RW & Other Resources to Improve Linkage to and Retention in Care

Collaborative & Coordinated Strategies

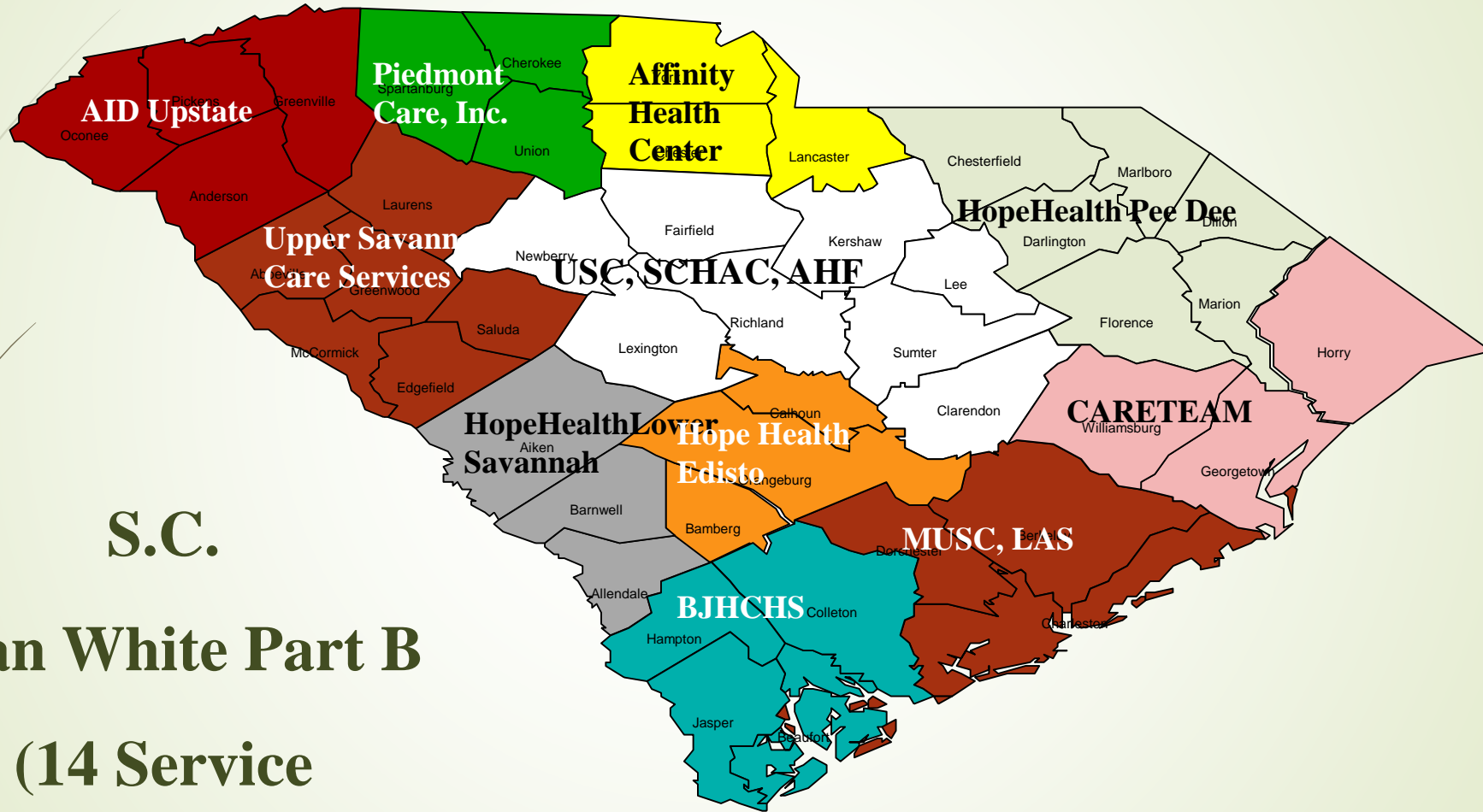
RW/ADAP

- **RW & ADAP (Care, Treatment and Medications):**
 - Needs Assessment, Contracts & plans
 - Insurance
 - Housing
 - Transpiration
 - Onboarding & related Technical Assistance
 - Monitoring, Data & Evaluation
 - Specialized Medical Case Management
 - Outreach
 - Continuous Quality Assurance
 - Website
 - Other
- **Data to Care**

COMPLEMENTARY

- Integrated HIV planning
- HIV Testing and Linkage
- HIV Prevention Evidence Based Interventions (EBIs)
- STD and Partner Services
- Social Work
- Nursing and Clinical Support
- STD/HIV Hotline

S.C.
Ryan White Part B
(14 Service Providers)



PoV²

The Backbone of the SC RW/ADAP Program

RW Part B Team

- ▶ **Leigh Oden** (Program Manager = 4):
 - ▶ Contracts/Fiscal, Grants
- ▶ **Christal Davis** (RW/ADAP Solutions and Innovations Manager)
- ▶ **Tangee Thomas** (Program Service Manager = 6):
 - ▶ Quality Assurance, SMCM, Outreach, monitoring & evaluation, Site visits, TA and Capacity Building Assistance, etc.

ADAP Team

- ▶ **Roshan McDaniel** (Program Manager = 10):
 - ▶ Program contracts and plans, coordination, enrollments, benefits management, data & evaluation, site visits and contract monitoring, TA and Capacity Building Assistance (CBA), etc.

Data, Systems Analysis, Program Support & Evaluation
Specialized Medical Case Management
Outreach
Quality Assurance
Enrollment, Benefits Management, Peer Advocacy & Support
Surveillance & Data to Care
HIV Testing & Linkage to Care, Partner Services, Social Work & Nursing/clinical Support

Outreach Workforce Summary: South Carolina (September 2017)

Funding Sources for Outreach Staff	# of Outreach Staff Funded	# of Staff Hired (excluding vacancies)
<i>ADAP Rebates</i>	33	28
<i>Ryan White Part B</i>	3	2
<i>Minority AIDS Initiative (MAI)</i>	4	3
<i>Public Health Workforce (Funded by ADAP Rebates)</i>	8	4
Total	45	37

- ❑ **ADAP funded (formerly NHAS):** This includes Outreach Specialists and Specialized Medical Case Managers.
- ❑ **RW-B funded:** This includes staff that were hired/in place at agencies that did not qualify for ADAP funded staff but use RW-B funds for Outreach Specialists.
- ❑ **RW-B MAI funded:** These Outreach staff were in place already under RW-B MAI. Their focus has shifted to the jails within their service areas, which covers 50% of jails in the state. RW-B MAI Outreach also includes the long-standing statewide Prison Discharge Planning Program (1 FTE).
- ❑ **Public Health Workforce:** These are newly hired health department employees who conduct outreach to PLWH who have never been linked to a RW care provider. (i.e., no RW provider will be looking for them without this workforce in place).

*Above is a summary of combined workforce, including those funded from ADAP Rebates Workforce Expansion. The South Carolina **Workforce Expansion for PLWH** not in care includes: Outreach, Specialized Medical Case Management, and Data to Care.*

PoV²

Central Office Program and Complementary Support Personnel

DIVISION STAFF = 50

Communication

RWPB = 16.5

ADAP = 10.5

Testing & Linkage (coordination) = 4

HIV Planning Council = 4

Surveillance & Tech. Support = 16

Partner Services ≈ 15

Clinical Support ≈ 12

Planning

Funded RW/ADAP Programs: 14

Funded HIV Prevention Programs: 11

Consensus

Training & TA

Data & Evidence

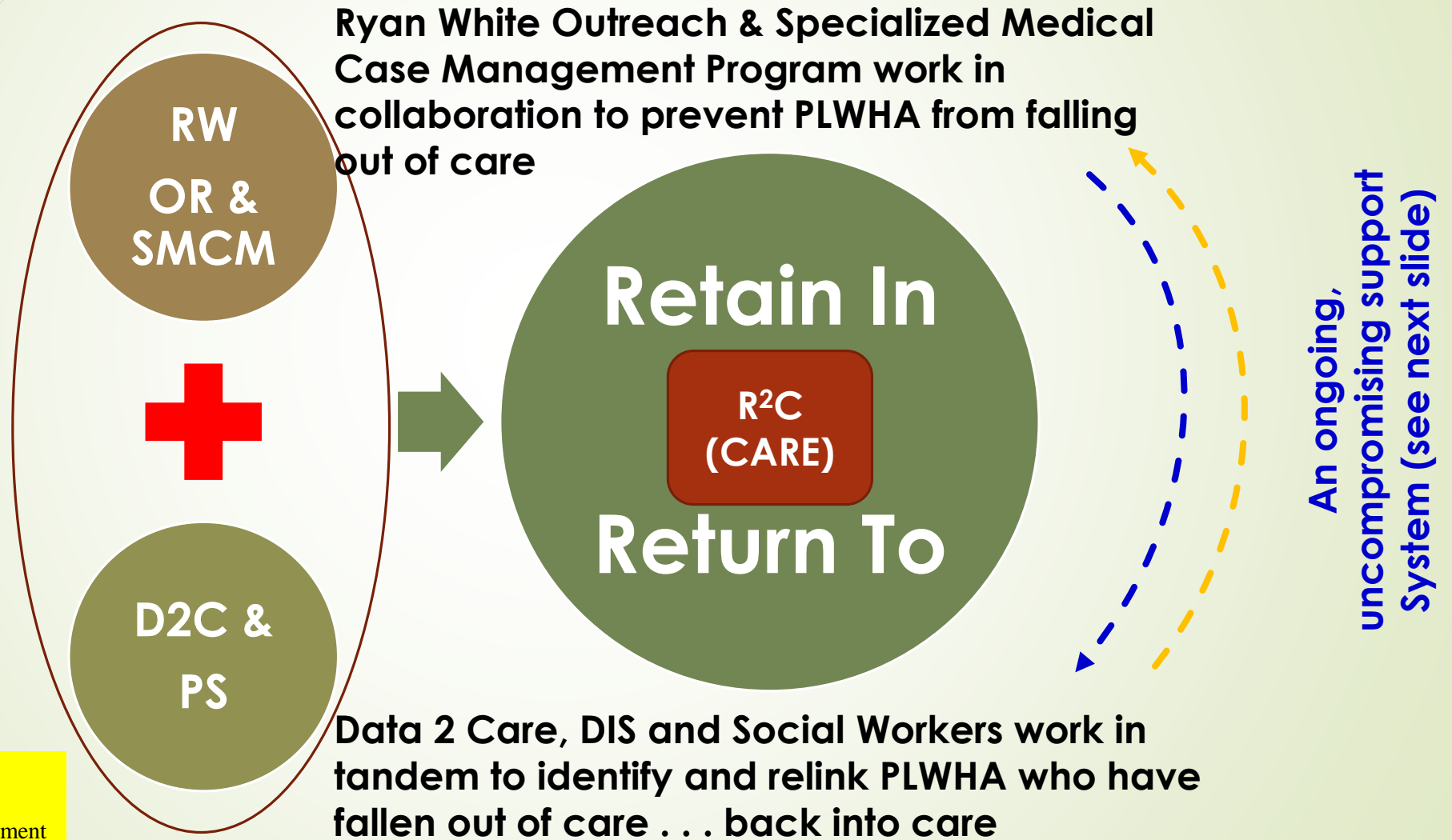
Collaboration
Coordination

Feedback

Monitoring & QA

Commitment

A Triangulated Framework for Retention in Care



D2C = Data to Care
OR = Outreach
SMCM = Specialized Medical Case Management
PS = Partner Services
R²C = Retention/Return to Care

Retention in Care Support System

- **Ryan White Part B:**
 - Outreach
 - **Specialized Medical Case Management**
- **ADAP (Sustained med support, adherence, Relink!)**
- **Data to Care (Relink!)**
- HIV Prevention (Test, Timely Linkage, EBIs)
- Hepatitis C (co-counseling and [re]referrals for [re]linkage; meds)
- STD and Partner Services (Referrals, [re]Linkage)
- Social Work ([re]referrals, [re]Linkage)
- Nursing and Clinical ([re]referrals, [re]Linkage)
- HIV Planning Council:
 - Coordinated Needs Assessment
 - Integrated SC HAS Plan
- Surveillance & Technical Support:
 - Surveillance Data
 - Molecular HIV Surveillance Data
- Data and Evaluation
 - Provide Enterprise monitoring, evaluation, analysis and reports
- CBA and TA:
 - In-house, Local, National
- **QUALITY ASSURANCE, MONITORING & FEEDBACK!**

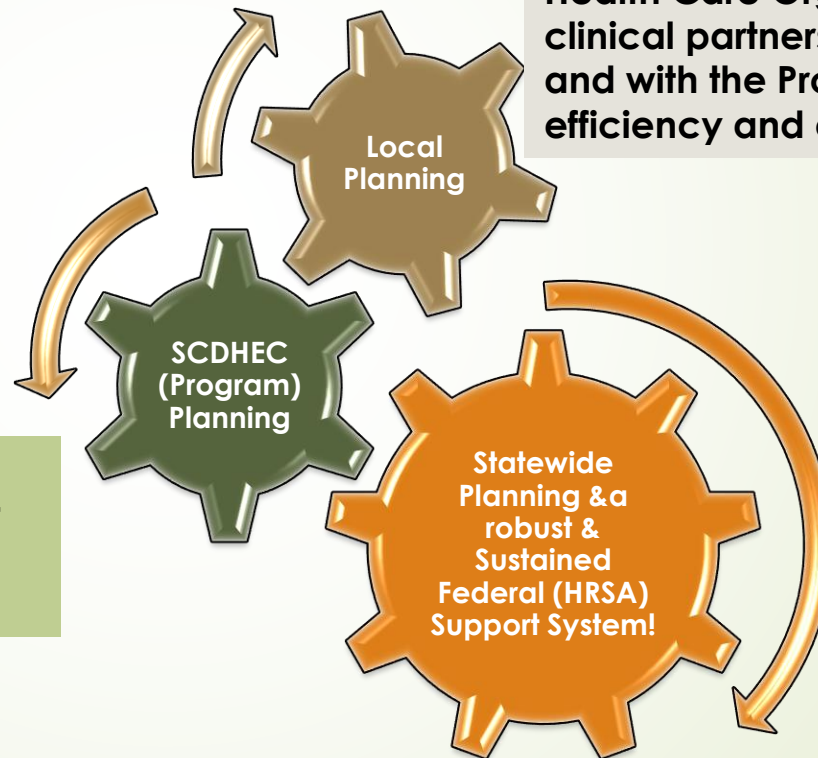
Leadership Support & Buy-in | Community and Patient Support & Buy-in

PoV²

The Cogs That Move Our Efforts

A Disparate but Interwoven SYSTEM of Interconnected and Interacting Systems!

A robust system of contracted community, Health Care Organizations,, and academic clinical partners that continually work together and with the Program to sustain quality, efficiency and effectiveness!



A centralized RW-ADAP program, with full systematic and proactive leadership support and buy-in, with core staff that is dedicated, experienced, highly trained and motivated!

An Integrated HIV Prevention Council made up of a statewide process, with assurances for parity, inclusion & representation of the infected, affected, interested and concerned + HRSA Support!



Contact Info

Thank You!

For further information, please contact:

Ali B. Mansaray (in concert with the RW/ADAP Team)

Director, STD/HIV & Viral Hepatitis Division,

Bureau of Communicable Disease Prevention and Control (BDCP),

South Carolina Department of Health and Environmental Control (SCDHEC)

Phone: (803) 898-0625

Email: mansarab@dhec.sc.gov